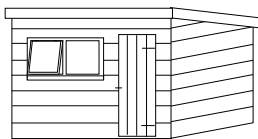
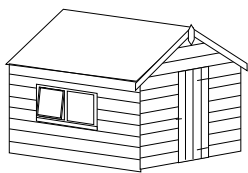


ROBUST RANGE



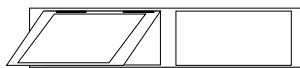
ALL PRICES INCLUDE V.A.T.

ACTUAL SIZE IS METRIC (FLOOR APROX. IMPERIAL SIZE)

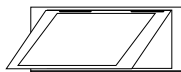
All external cladding is now attached using stainless steel nails

| size | base coat only | top coat Protek 2 coats | erection | bearers + set out | base work |
|--------------------|----------------------|-------------------------------|----------|-------------------------|--------------|
| 1.8X1.2M (6X4) | £926 | +£200 | +£160 | +£40 | +£389 |
| 2.1X1.5M (7X5) | £1063 | +£215 | +£170 | +£45 | +£406 |
| 2.4X1.8M (8X6) | £1284 | +£225 | +£180 | +£55 | +£415 |
| 3MX1.8M (10X6) | £1454 | +£245 | +£200 | +£65 | +£471 |
| 2.4X2.4M (8X8) | £1636 | +£245 | +£200 | +£80 | +£537 |
| 3MX2.4M (10X8) | £1843 | +£280 | +£220 | +£80 | +£550 |
| 3.6X2.4M (12X8) | £1993 | +£310 | +£240 | +£110 | +£654 |

OPTIONAL EXTRAS



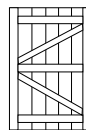
+ £65



+ £55



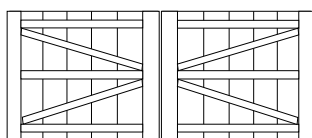
+ £40



+ £95

EXTRA DOOR

double doors



4ft + £70

5ft + £90

6ft + £95

shed must be 3ft
wider than doors

| size | base coat only | top coat Protek 2 coats | erection | bearers + set out | base work |
|--------------------|----------------------|-------------------------------|----------|-------------------------|--------------|
| 4.2X2.4M (14X8) | £2509 | +£340 | +£270 | +£120 | +£750 |
| 4.8X2.4M (16X8) | £2751 | +£370 | +£310 | +£140 | +£800 |
| 5.4X2.4M (18X8) | £3134 | +£420 | +£350 | +£160 | +£930 |
| 6X2.4M (20X8) | £3299 | +£450 | +£370 | +£180 | +£1020 |
| 3X3M (10X10) | £2558 | +£385 | +£380 | +£200 | +£730 |
| 3.6X3M (12X10) | £2797 | +£420 | +£400 | +£220 | +£746 |
| 4.2X3M (14X10) | £3117 | +£475 | +£440 | +£240 | +£1035 |

FRAME SIZE WALLS 70mm X 35mm

FRAME SIZE ROOF 70mm X 35mm

**CLADDING SIZE shiplap ex 25 x 125MM
finished @ 22mm thick**

LOWEST EVE 1.8M HIGHEST EVE 2.2M

standard door 0.9m (3 ft) wide x 1.8 high

**SUPPLIED WITH SINGLE DOOR
1 FIXED WINDOW & 1 OPENING
AS STANDARD**

**MIN DELIVERY ON ALL BUILDINGS £50
FOR LOCAL ALL OTHER £POA**

| size | base coat only | top coat Protek 2 coats | erection | bearers + set out | base work |
|---------------------|----------------------|-------------------------------|----------|-------------------------|--------------|
| 4.8X3M (16X10) | £3324 | +£500 | +£460 | +£260 | +£1082 |
| 5,4X3M (18X10) | £3568 | +£525 | +£480 | +£280 | +£1105 |
| 6X3M (20X10) | £3864 | +£540 | +£500 | +£300 | +£1285 |
| 3.6X3.6M (12X12) | £3289 | +£480 | +£490 | +£240 | +£1012 |
| 4.2X3,6M (14X12) | £3642 | +£530 | +£530 | +£260 | +£1188 |
| 4.8X3.6M (16X12) | £3891 | +£570 | +£550 | +£300 | +£1295 |
| 5.4X3.6M (18X12) | £4195 | +£600 | +£570 | +£320 | +£1376 |
| 6X3.6M (20X12) | £4521 | +£630 | +£600 | +£340 | +£1556 |

STIX & STONES

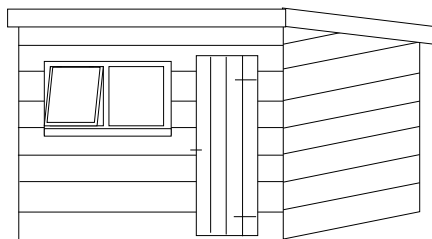
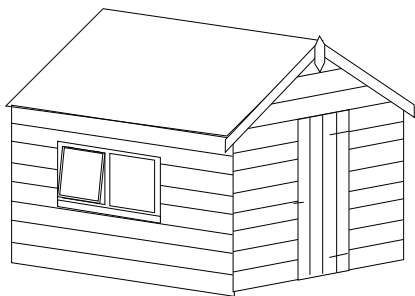
WE SPECIALIZING IN BESPOKE GARDEN BUILDINGS

ROBUST SHEDS

STIX & STONES
MAIN ROAD
ALRESFORD
COLCHESTER
ESSEX CO7 8DD

EMAIL: info@stixandstones.co.uk
WEBSITE: www.stixandstones.co.uk

2025 ISSUE No 1



ALL PRICES INCLUSIVE OF V.A.T.

TEL: 01206 826835

TUE - FRI 8.30am-4.00pm

SAT-8.30am-12.00 NOON

Closed on Mondays

Thursdays & Fridays

we may be out on site erecting buildings